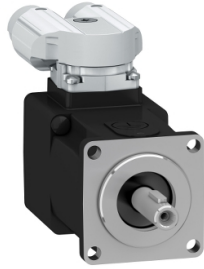


Product data sheet

Specifications



servo motor BSH, Lexium 32,
0.21N.m, 9000rpm, 40mm, keyed
shaft, 16 Sincos Multi turn, without
brake, IP50

BSH0401P17A2A

Product availability: Non-Stock - Not normally stocked in
distribution facility

Price*: 1,172.00 USD

Main

Device short name	BSH
Product or Component Type	Servo motor
Maximum mechanical speed	10000 rpm
Continuous stall torque	1.86 lbf.in (0.21 N.m) LXM32.U60N4 1.5 A, 480 V, three phase 1.86 lbf.in (0.21 N.m) LXM32.U60N4 1.5 A, 400 V, three phase 1.86 lbf.in (0.21 N.m) LXM32.U45M2 1.5 A, 230 V, single phase
Peak stall torque	7.08 lbf.in (0.8 N.m) LXM32.U60N4 1.5 A, 480 V, three phase 7.08 lbf.in (0.8 N.m) LXM32.U60N4 1.5 A, 400 V, three phase 7.08 lbf.in (0.8 N.m) LXM32.U45M2 1.5 A, 230 V, single phase
Nominal output power	166 W LXM32.U60N4 1.5 A, 480 V, three phase 166 W LXM32.U60N4 1.5 A, 400 V, three phase 77 W LXM32.U45M2 1.5 A, 230 V, single phase
Nominal torque	1.558 lbf.in (0.176 N.m) LXM32.U60N4 1.5 A, 480 V, three phase 1.558 lbf.in (0.176 N.m) LXM32.U60N4 1.5 A, 400 V, three phase 1.629 lbf.in (0.184 N.m) LXM32.U45M2 1.5 A, 230 V, single phase
Nominal speed	9000 rpm LXM32.U60N4 1.5 A, 480 V, three phase 9000 rpm LXM32.U60N4 1.5 A, 400 V, three phase 4000 rpm LXM32.U45M2 1.5 A, 230 V, single phase
Shaft end	Keyed
IP Degree of Protection	IP50 standard
Speed feedback resolution	32768 points/turn x 4096 turns
Holding brake	Without
Mounting Support	International standard flange
Electrical Connection	Rotatable right-angled connectors

Complementary

Range Compatibility	Lexium 32
supply voltage max	400 V
Phase	Three phase
Continuous stall current	1.12 A
maximum continuous power	220 W
Maximum current Irms	4.7 A LXM32.U60N4 480 V 4.7 A LXM32.U60N4 400 V 4.7 A LXM32.U45M2 230 V
Maximum permanent current	1.12 A

Price is "List Price" and may be subject to a trade discount – check with your local distributor or retailer for actual price.

Switching frequency	8 kHz
Second shaft	Without second shaft end
Shaft diameter	0.3 in (8 mm)
Shaft length	1.0 in (25 mm)
Key width	0.5 in (12 mm)
Feedback type	Multiturn SinCos Hiperface
Motor flange size	1.6 in (40 mm)
Number of motor stacks	1
Torque constant	0.19 N.m/A 248.0000000000 °F (120 °C)
Back emf constant	13.6 V/krpm 68.0000000000 °F (20 °C)
Number of motor poles	10
Rotor inertia	0.0232 kg.cm ²
Stator resistance	17.2 Ohm 68.0000000000 °F (20 °C)
Stator inductance	14.6 mH 68.0000000000 °F (20 °C)
Stator electrical time constant	0.85 ms 68.0000000000 °F (20 °C)
Maximum axial force Fa	0.2 x Fr
Type of cooling	Natural convection
Length	2.9 in (73.4 mm)
Centring collar diameter	1.2 in (30 mm)
Centring collar depth	0.10 in (2.5 mm)
Number of mounting holes	4
Mounting holes diameter	0.2 in (4.5 mm)
Circle diameter of the mounting holes	1.8 in (46 mm)
Net Weight	0.9 lb(US) (0.4 kg)

Ordering and shipping details

Category	US1PC5318282
Discount Schedule	PC53
GTIN	3606485467139
Returnability	No
Country of origin	DE

Packing Units

Unit Type of Package 1	PCE
Number of Units in Package 1	1
Package 1 Height	4.3 in (11.0 cm)
Package 1 Width	6.7 in (17.0 cm)
Package 1 Length	9.4 in (24.0 cm)
Package 1 Weight	22.1 oz (627.0 g)

Sustainability

Green Premium™ label is Schneider Electric's commitment to delivering products with best-in-class environmental performance. Green Premium promises compliance with the latest regulations, transparency on environmental impacts, as well as circular and low-CO₂ products.

Guide to assessing product sustainability is a white paper that clarifies global eco-label standards and how to interpret environmental declarations.

[Learn more about Green Premium >](#)

[Guide to assess a product's sustainability >](#)



Transparency RoHS/REACH

Well-being performance

Mercury Free

Rohs Exemption Information Yes

Pvc Free

Certifications & Standards

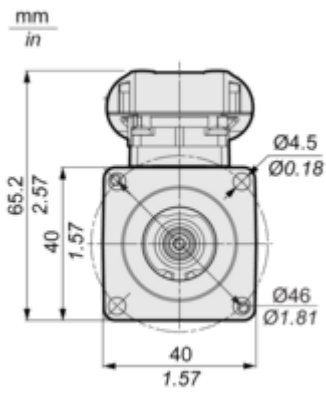
Reach Regulation	REACH Declaration
Eu Rohs Directive	Pro-active compliance (Product out of EU RoHS legal scope)
China Rohs Regulation	China RoHS declaration
Environmental Disclosure	Product Environmental Profile
Weee	The product must be disposed on European Union markets following specific waste collection and never end up in rubbish bins.
Circularity Profile	No need of specific recycling operations
California Proposition 65	"WARNING: This product can expose you to chemicals including: Lead and lead compounds, which is known to the State of California to cause cancer and birth defects or other reproductive harm. For more information go to www.P65Warnings.ca.gov "

Dimensions Drawings

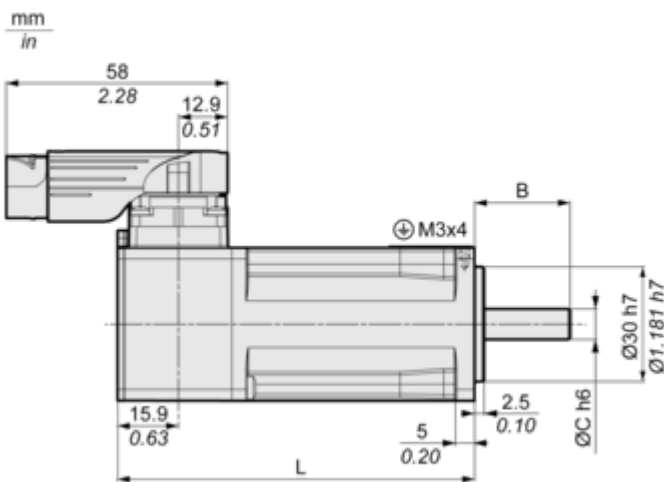
Servo Motors Dimensions

For Servo Motor without Brake

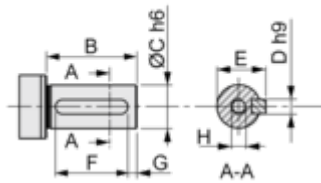
Front view



Left view



DIN 6885 A



	Dimensions in mm	Dimensions in in.
L	73.4	2.89
B	25	0.98
C	8	0.31
D	3	0.12

	Dimensions in mm	Dimensions in in.
E	9.2	0.36
F	12	0.47
G	4	0.16
H	DIN 332 DS M3 x 9	
A	DIN 6885-A3x3x12	